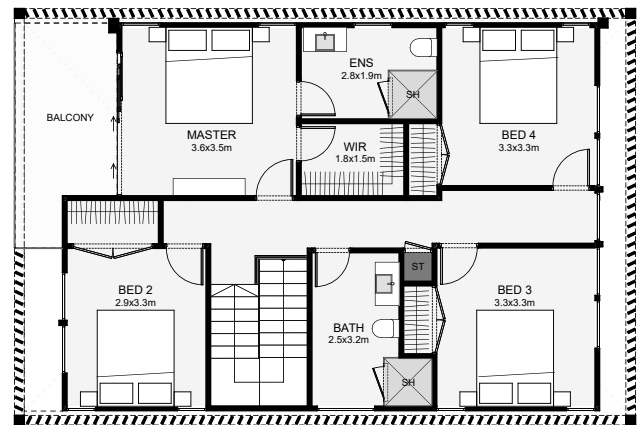
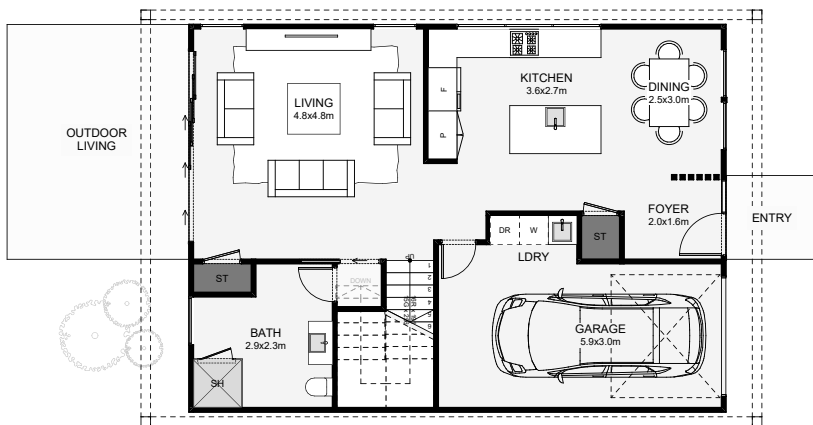




Designed from a simple rectangle base with a louvre structure upstairs adds a layer architectural sophistication to this home. Inside there are four bedrooms upstairs with living down, an open kitchen/dining and a semi-secluded living, adding a level of privacy. A nice feature of this home is its third bathroom downstairs and the enclosed balcony off the master. If ultra-modern architecture and privacy is your thing, this home is worth trying on your section.



Floor Area: 176m²

 1
  4
  3
  1
  12.9m
  8.7m

Contact Kurt:

Ph: 021 368 081

E: darcyhomes@outlook.com

W: www.darcyhomes.co.nz