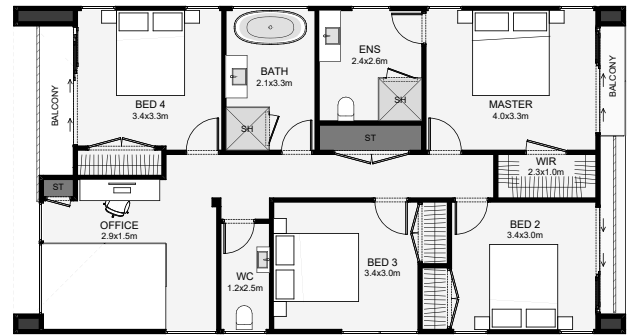
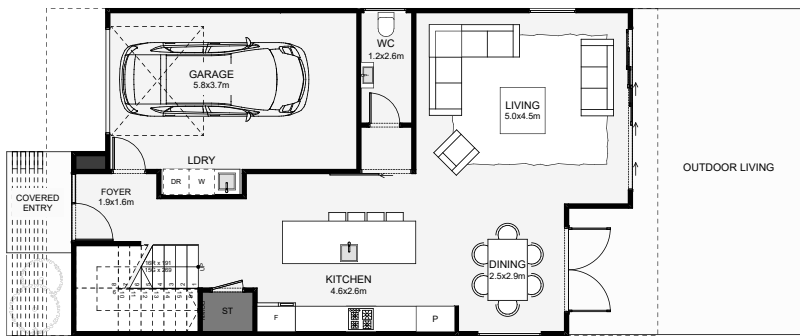




This home combines plaster, brick and painted laminated timber beams to pull off a modern, fun design within a small footprint. Inside, four-bedrooms plus an additional study reside upstairs and make this a desirable option for those working from home. The lounge is offset for a semi-separate layout feel and privacy. A great feature with this home is being able to open up a sliding door from three bedrooms upstairs, bringing more of your chosen outdoor vibe inside!



Floor Area: 187m<sup>2</sup>

 1
  4
  2
  1
  14.4m
  7.7m

Contact Kurt:

Ph: 021 368 081

E: [darcyhomes@outlook.com](mailto:darcyhomes@outlook.com)

W: [www.darcyhomes.co.nz](http://www.darcyhomes.co.nz)